



Moving the Alabama Princess, a paddle-wheel boat tourism attraction, from Guntersville to Gadsden. Later, moved the vessel a second time back to Guntersville.

## Hollis Kennedy House Movers

**A**lthough the company was founded in 1973, Hollis Kennedy House Movers had its origin many years earlier. Hollis' father, Harry, had moved houses and did some excavating with what would now be considered primitive equipment but was sufficient for the day. Hollis recalls pulling houses very early in the morning when he was only 11 or 12 years of age in 1948.

Hollis' father, Harry Kennedy, started moving houses in the late 1940's. Now the grandson, Keith, is the third generation house mover running the crews.

Keith, too, worked in the business part time from age 12 and began full time in the business in 1983. Now, a fourth generation member of the family, Keith's 17-year-old son, Nicholas, who works part-time, continues and enjoys the profession.

While the company moves some concrete slab and brick structures, frame ranch houses make up the majority of moves, which is usually within a 60-mile radius of the company's office in Athens, Alabama.

The company operates two crews with its seven employees. While Hollis does the estimating "and what-



Lisa, Keith, Nicholas, Hollis and Marsha Kennedy, brain trust of the company.

By JACK E. BRYMER, Contributing Editor

ever else needs to be done," Keith runs the crews. "I'm there to make it happen," he says of his role.

Crew members are multi-skilled, according to Keith. The company maintains its own shop for fabrication, maintenance and repairs. This allows the company to maintain full-time employment by performing maintenance and other work when the weather or other conditions prevent moving structures.

Getting clearance by utilities, especially telephone companies, is a problem for the company, according to Keith. Regardless, he says the company has good relationships with the utilities and city officials.

Continuing increases in insurance premiums are also a growing concern, he said.

While preferring moves that involve traveling on public rights of way is their "bread and butter" work, Hollis Kennedy House Movers takes on most any job that is challenging, according to Keith.

"The biggest thing we've moved was a 330-ton solid brick two story building for three-quarter miles without a crack," he said. Another challenging move was the city of Scottsboro's first courthouse, built in 1810. It was solid brick and was moved one mile with no problems. A third was a 325-ton limestone rock church with a concrete floor built by the Mars family of the Mars Candy Company.

The company is structured to dig and pour footings. It can also raise houses, do foundation repairs and even build new foundations when necessary.

Members of IASM for more than 20 years, Keith said the benefits of the association are many. "We learn so much at the annual meeting," he said recently in *text continues on page 42*



Transported two railroad passenger cars to a government terrorist training camp.



Kennedy House Movers received \$3,450.00 in 1973 for moving this 45 year-old structure weighing approximately 75 tons two miles.



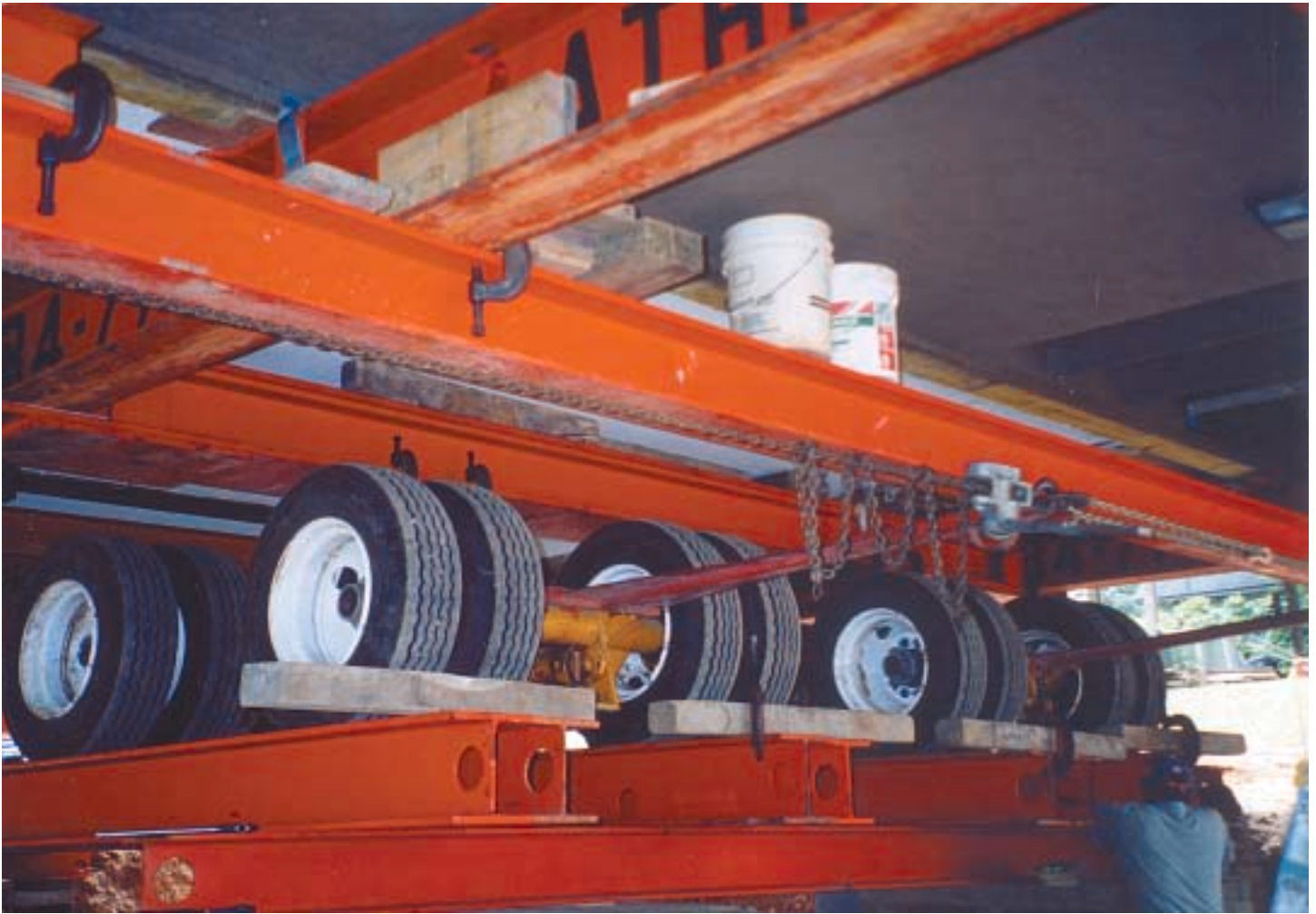
Moving a house over a mountain in Huntsville on a steep, narrow two-land road, the only route possible, took considerable planning and cooperation with governmental agencies.



Double jeopardy: Building a loose rock base bridge over Paint Rock River in north Alabama required the use of a bulldozer to ensure steady movement to prevent the rocks from slipping. A second concern was a possible thunderstorm 10 miles up the river that could turn the shallow stream into raging six-foot rapids.

A typical "bread and butter" job requiring close cooperation with utilities a good right of way made possible by two days of tree trimming in advance and an additional stop for a missed branch.





An interesting shot of dollies rolling over steel beams onto a basement.



Relocating a residence to a mountainside plot required 18 feet of cribbing for slide beams to build a basement.

**To read the rest of this story and other articles in this issue of Structural Mover, contact IASM for information on Membership. Structural Mover is published by IASM for members. As a member you receive all issues of Structural Mover.**