

Most Unusual Move:

OPEN CATEGORY

DeVooght House & Building Movers

Valders, Wisconsin, USA

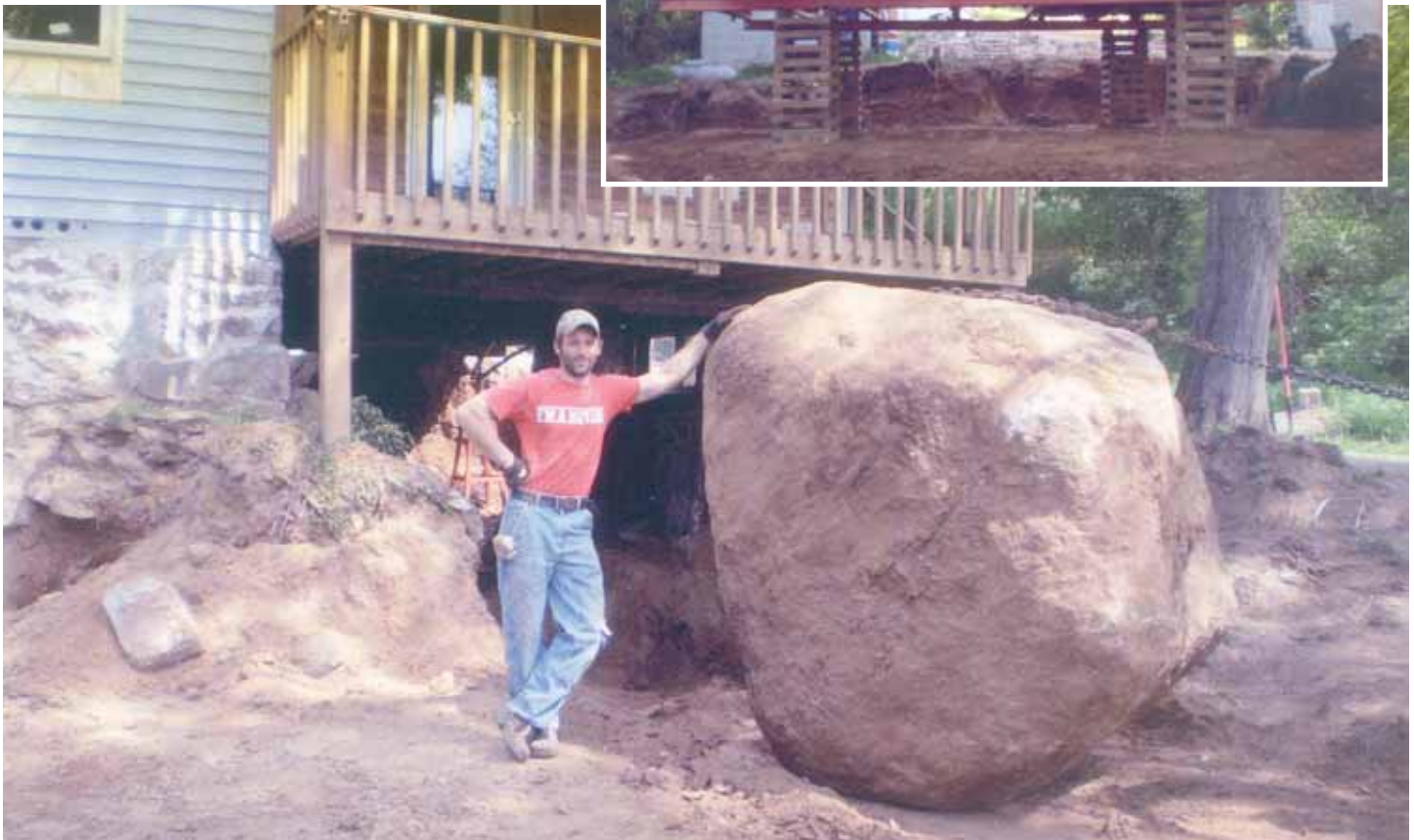
Big Rock Underpin in Waupaca, Wisconsin



Jason DeVooght, Don DeVooght, and Dave DeVooght

While excavating under a 36-foot x 50-foot farmhouse for a new foundation, a most unusual thing happened. A large boulder was discovered. The rock measured six-feet x six-feet and obstructed placement of cribbing and steel need to lift the structure. The stone had to be removed.

The first attempt was made with a loader but that didn't work. After careful consideration it was decided to winch the stone out of the basement area. This worked well and after it was removed it was placed in the customer's front yard to be a part of the building's landscape.



Tallest Structure Moved:

OPEN CATEGORY

Expert House Movers of Maryland

Sharptown, Maryland, USA

Sankaty Head Lighthouse, Nantucket Island, Massachusetts

Due to erosion of a cliff this 157 years old structure, 90 feet tall and weighing 528 tons, was rolled 300 feet on a route with an eight foot elevation drop. Cost of the project was \$380,000.



Gabe Matyiko and Richard Lohr



Widest Structure Moved:

OPEN CATEGORY

Deitz House Moving Engineers, Inc.

Muskegon, Michigan

Office Machines Building

In the autumn of 2006 and spring of 2007 Deitz House Moving Engineers, Inc. relocated the building to allow for commercial development.

The pole-constructed building, measuring 70 feet wide x 100 feet long, was lifted off a slab and a new wooden 4,900 square foot floor was constructed under it. The price tag was \$30,000.



Tallest Structure Moved:

UNDER \$30,000 CATEGORY

Wild Heavy Haul, Inc.

LaGrange, Georgia, USA

Marshall Duct Section Transport

For two weeks in May 2007 relocated this structure for the Duke Energy Marshall Steam Station in Terrell, North Carolina from an assembly yard to its final location. The structure was 13 feet wide, 100 feet long, 30 feet in height and weighed 115 tons. The move was made for a price of \$17,000.



Heaviest Structure Moved:

UNDER \$30,000 CATEGORY

DeVooght House & Building Movers

Valders, Wisconsin

Millen Cottage, Pewaukee Lake, Wisconsin

This two-story house was lifted six feet for a new poured concrete foundation. The house with a two-story fireplace was built on the ground. Six 12 x 12 50-foot crossbeams were used along with six 8 x 8 20-foot needle beams. The structure was lifted using 12 JSJS crib jacks and two unified jacking machines. Once the structure was lifted to its new height it was excavated with two skid loaders for a new foundation.

The project occurred over a seven-day period in July 2007.



Jason DeVooght



Longest Structure Moved:

UNDER \$30,000 CATEGORY

Heneault & Gosselin, Inc.

Riviere-du-Loup, Quebec, Canada

Motel Spring Elevation

The building needed to be elevated in order to construct new foundations. It was comprised of three main parts creating a total length of 337 feet. It was elevated five feet. The combined lifted weight, including building and steel beams, was 195 tons.

The work was performed over nine days in the spring of 2007 for a price of \$28,500.



Peter Tobin



Widest Structure Moved:

UNDER \$30,000 CATEGORY

Marcus Building Movers

Raymond, Minnesota, USA

Kolyn Prodochi Job

This project took place over one week in October 2007. The structure was a 60-foot wide x 120-foot long pole barn. It was moved from an abandoned farm place to a new yard five miles away for use as a cattle barn. After relocation Marcus elevated the structure four feet to create 18-foot sidewalls and then bolted in new poles.



Eric Marcus



Best Time-Saving Device:

HONOR CATEGORY

Davie Shoring, Inc.

Kenner, Louisiana, USA

Redi-built Mover

Warren Davie has modified a container handler to stack 24 feet x 52 feet "Redi-built" completed structures weighing 30 tons. With the Redi-built Mover Davie Shoring, Inc. can lift the buildings to an elevation of 26 feet, with no damage to the structure, in a matter of minutes. The forks are 20 feet apart. The company can stack the houses two-high on stands to transport 12 houses to a barge.



Judges Award:

HONOR CATEGORY

MCF Movers, LLC

Newburgh, Indiana, USA

Jackson Covered Bridge

In Park County, five miles north of Rockville, IN, the historical Jackson covered bridge was located on Sugar Creek, an unpredictable creek, in order for the structure to be restored over the summer months. The move of 400 feet occurred on February 21, 2007. Prior to that, in January, a temporary bridge was constructed. The restored bridge was returned to its original location in August-September, 2007.

The all-wood arch bridge, the longest single span covered bridge still in use for vehicle traffic in the United States. It spans 227 feet. Prior to restoration the weight limit capacity was three tons. Following restoration the load capacity is now 13 feet. The cost of the project was \$170,000.

