

Longest Structure Moved:

OPEN CATEGORY

Ron Holland Housemoving, Inc.
Forest City, Iowa



Project:
Fort Dodge Airport Expansion

An expansion of the Fort Dodge, Iowa airport required this house, built in 1977, to be removed from the area. It would have been a travesty to destroy the structure because of its excellent quality. Finding a purchaser was problematic since the wideness of the structure would make moving it more costly. Specifications: Square footage, 4,416; travel width, 75'6"; total

length including truck, 125'; weight, 148 tons, 59 of which consisted of steel.

A buyer came forth and contracted with Ron Holland Housemoving, Inc. to move the structure one half mile to a new location.



Discuss this move and others with Ron Holland representatives during the 2007 annual conference in Tucson, Arizona February 14-18 at the Hotel Arizona.

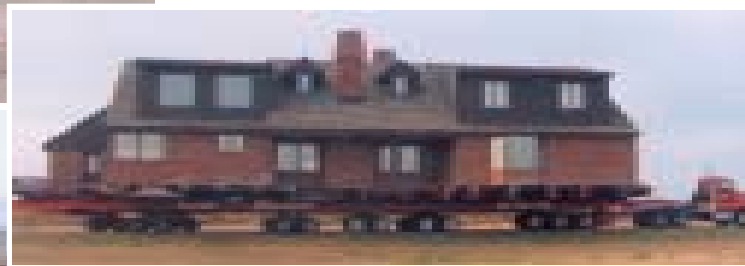
Heaviest Structure Moved ON Rubber-Tired Dollies:

OPEN CATEGORY

Telkamp Housemoving

Brookings, South Dakota

Project:
The Reed House



A realtor, Mark Reed, purchased this structure through a program with the United States Army Corps of Engineers. It was located below the Oche Dam in Ft. Pierre, SD. He wanted to relocate it above the dam to a lot he owned 12 miles away and establish a time-share lease arrangement. Telkamp Housing was awarded the contract to move the 265 tons structure.

Tallest Structure Moved:

OPEN CATEGORY

Heneault & Gosselin, Inc.

Riviere Du Loup, Quebec, Canada



Project:

Boise Campetre Chapel

This historic chapel in Val David, Quebec, needed to be moved in order to make room for a residential development. It will now serve as office space and a meeting facility. The project was performed during a week when the temperature was minus thirty degrees (-30 degrees). The equipments' hydraulic lines required insulation to prevent hydraulic fluid from freezing.

The 77' long x 30' wide 59' high structure weighing 124 tons was moved a distance of one-half (1.5) mile.



Discuss this move and others with Heneault & Gosselin representatives during the 2007 annual conference in Tucson, Arizona February 14-18 at the Hotel Arizona.



Heaviest Building Moved NOT on Rubber-Tired Dollies:

OPEN CATEGORY

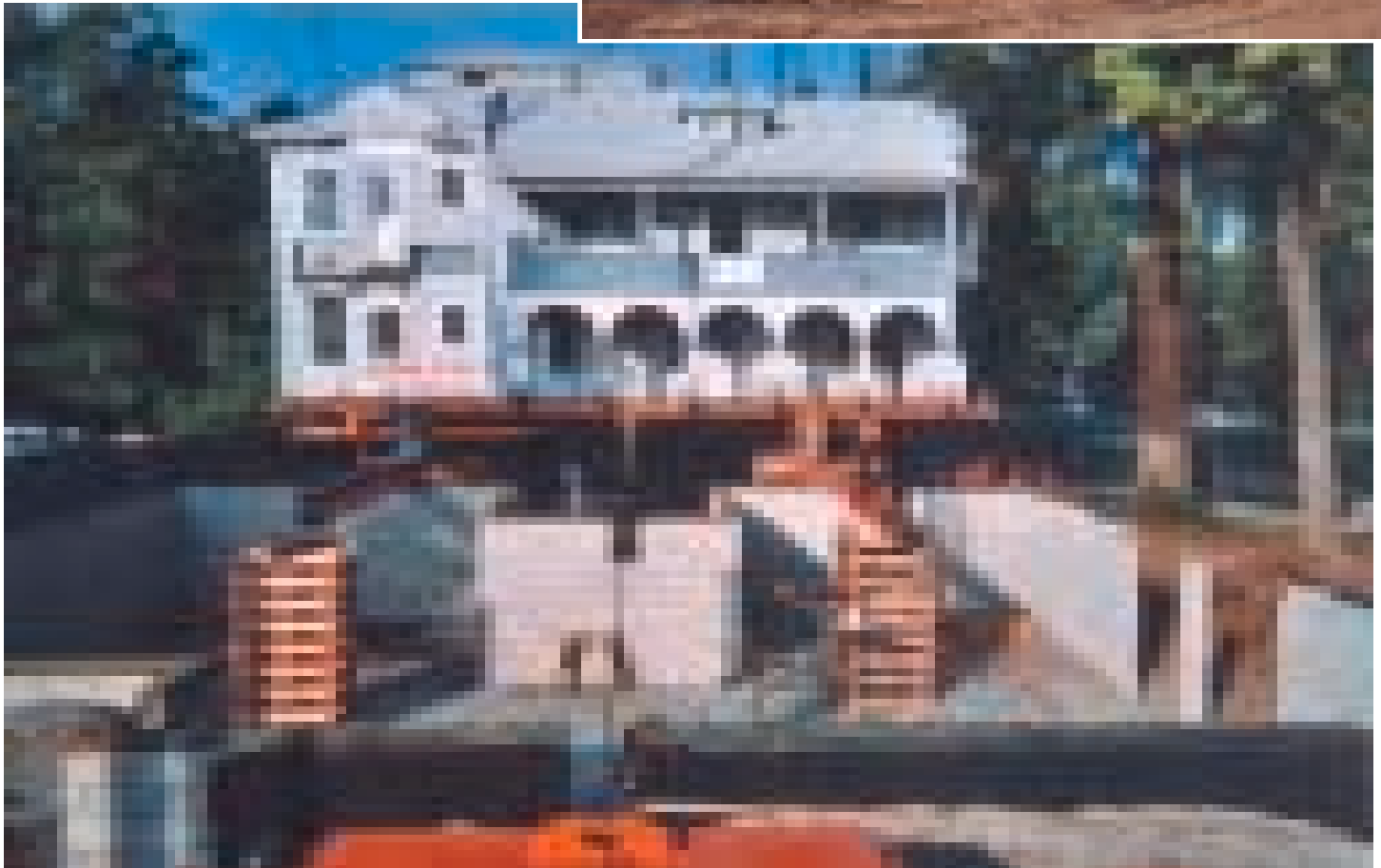
Cen-Cal Moving, Inc. Montclair, California

Project:
Mission Gables Bowl House



The City of Redland, California contacted Rick Craig and Darrell Foreman, Co-owners of Cen-Cal Heavy Moving, Inc., about raising or moving a house that was planned for upgrades and restoration. The Mission Gables Bowl House, a 55' wide by 60' long by 35' tall three-story structure is listed on both the Redlands and California registers of historic structures and was in need of a complete restoration. As part of the restoration the city wanted to add a nine (9) foot high full basement, with restrooms and outdoor access by the audience from the city's adjacent outdoor amphitheater.

The project required the structure be moved off the existing foundation to the back of the property to allow for excavation and construction of the new basement and foundation walls that would be five (5) feet above grade when completed. The 220-ton structure was elevated on 18 hydraulic jacks, placed on rollers and moved to the temporary location. When the basement was completed the roll beams were placed over the foundation walls on cribbing and the structure was winched into place.



Structure Moved with the Most Square Footage on One Level:

OPEN CATEGORY

Blackwell Building Movers

Armstrong, British Columbia, Canada

Project:

Home Hardware Warehouse



The 74.5' wide by 97' long creating a square footage of 7,226.5' was moved in October and November 2005 in Vernon, British Columbia, Canada.

The roof portion was lowered to dollies and moved to the far side of the yard and elevated 18' with new support structure placed for lumber storage. 12-inch beams 60 feet long, plus 14 inch square tubes 50 feet long loaded

with one-foot spacers. Then 12-inch beams spaced one foot running parallel to the mains. This loaded 5 feet above the dolly height for ease working and ground clearance.

This project also received the Widest Structure Moved in the under \$30,000 Category (See page 31 in Volume 24, Number 2, June 2006).



Discuss this move and others with Blackwell Building Mover representatives during the 2007 annual conference in Tucson, Arizona February 14-18 at the Hotel Arizona.

Longest Structure Moved:

UNDER \$30,000 CATEGORY

Laurie McCulloch Building Moving & Mechanical

Whitby, Ontario, Canada



Project:
Catherwood
House

The structure was 80 feet long. This project also received the Heaviest Structured Moved Under \$30,000 Category (See page 34 in Volume 24, Number 2, June 2006)



Robbins and Company

Pacific Northwest's oldest and largest Structural Mover is looking for individuals interested in relocating to the Northwest

Located in Seattle, Washington, Robbins and Company has been moving buildings and machinery since 1952. We work continuously, year round and offer full benefits, including, paid vacation, health insurance, and a SIMPLE IRA retirement plan.

Pay ranges between \$18.00 and \$33.50 per hour depending on experience and job category

Robbins and Company House Moving: 1-800-577-5285

Website: www.robbinsandco.com

e-mail: donna@robbinsandco.com

Widest Structure Moved:

UNDER \$30,000 CATEGORY

Rollaway Movers, Inc.

Grand Rapids, Michigan

Project:
Ter Horst House



This large two-story house in Holland, Michigan on Lake Macatawa was moved in December 2005. It was moved across the street to make room to build a new house on the waterfront lot. It had been totally remodeled the previous year and is a very elegant house. The structure is 64 feet wide with three-foot eaves. The length is 55 feet six inches with three-foot eaves.



Tallest Structure Moved:

UNDER \$30,000 CATEGORY

Scrib's House Moving and Heavy Hauling David City, Nebraska

Project:
Barn Move for Mega Movers Television Series

Moved this 64-foot high barn 27 miles in rural Nebraska.



EMPLOYMENT OPPORTUNITY

Progressive, international company has a position of opportunity available in the **Pacific Northwest** for a **Structural Mover** with a minimum of *5 years experience* and a *Class 1 CDL*.

Contact:

Nickel Bros. House Moving • ph. 1-866-606-2237
or e-mail: vic@nickelbros.com

Heaviest Structure Moved:

UNDER \$30,000 CATEGORY

Jeremy Patterson Construction

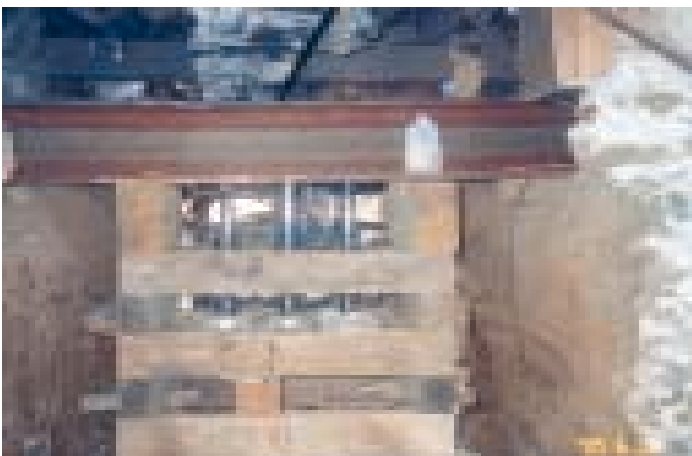
Washington, Iowa

Project:
Tom Taylor



Jeremy Patterson Construction was contracted by a young couple to elevate this structure for remodeling in a new subdivision at a price of \$18,000. But there was unexpected trouble ahead. The building, 51 feet wide by 67.5 feet long, need to be raised for a new foundation and dugout. The concrete porch was constructed to allow for a storm shelter underneath. Jeremy used 8 x 8 x 31' and 12' x 12' x 96' cross beams for the weight. While excavating, bedrock was hit requiring 13" of rock to be removed in order to reach the correct height.

When attempting to elevate the structure it would not budge. Upon inspection a layer of brick on top of the sill in the outside walls was discovered. To solve the problem more jacks were added and the 347,000 lbs structure was lifted. With the use of jackhammers on uni-loaders and donated labor from the crew the job was completed for the original bid. It turned out to be the heaviest and most labor-intensive job performed by Patterson Construction.



Heaviest Structure Moved ON Dollies:

UNDER \$30,000 CATEGORY

Telkamp Housemoving Brookings, South Dakota

Project:
The Grode House



Joel Grode and his wife had been living in this classic Victorian home in the small town of Henry, South Dakota. Both, however, has been reared on farms and desired to again live in the countryside. So they contracted with Telkamp Housemoving to move their 120-ton house two miles outside the town of Henry.

